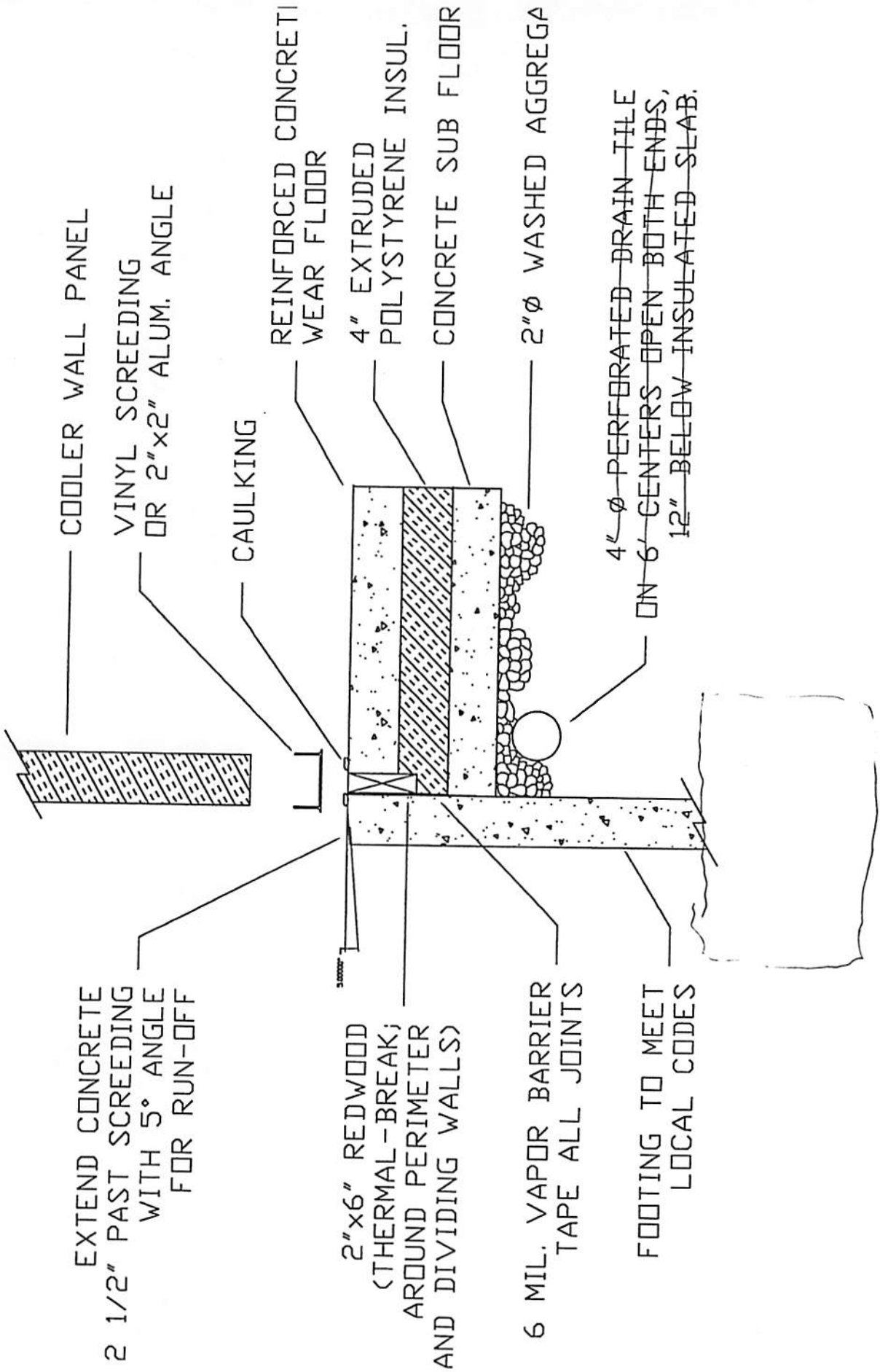


# FLOORING DETAIL

(FLOORLESS APPLICATION)



EXTEND CONCRETE  
2 1/2" PAST SCREEDING  
WITH 5° ANGLE  
FOR RUN-OFF

2" x 6" REDWOOD  
(THERMAL-BREAK;  
AROUND PERIMETER  
AND DIVIDING WALLS)

6 MIL. VAPOR BARRIER  
TAPE ALL JOINTS

FOOTING TO MEET  
LOCAL CODES

COOLER WALL PANEL

VINYL SCREEDING  
OR 2" x 2" ALUM. ANGLE

CAULKING

REINFORCED CONCRETE  
WEAR FLOOR

4" EXTRUDED  
POLYSTYRENE INSUL.

CONCRETE SUB FLOOR

2" Ø WASHED AGGREGA

4" Ø PERFORATED DRAIN TILE  
ON 6' CENTERS OPEN BOTH ENDS,  
12" BELOW INSULATED SLAB.

Design used for Conceptual purposes Consult local Engineer for requirements.  
Craig Industries is not responsible for foundation design. This is an example.